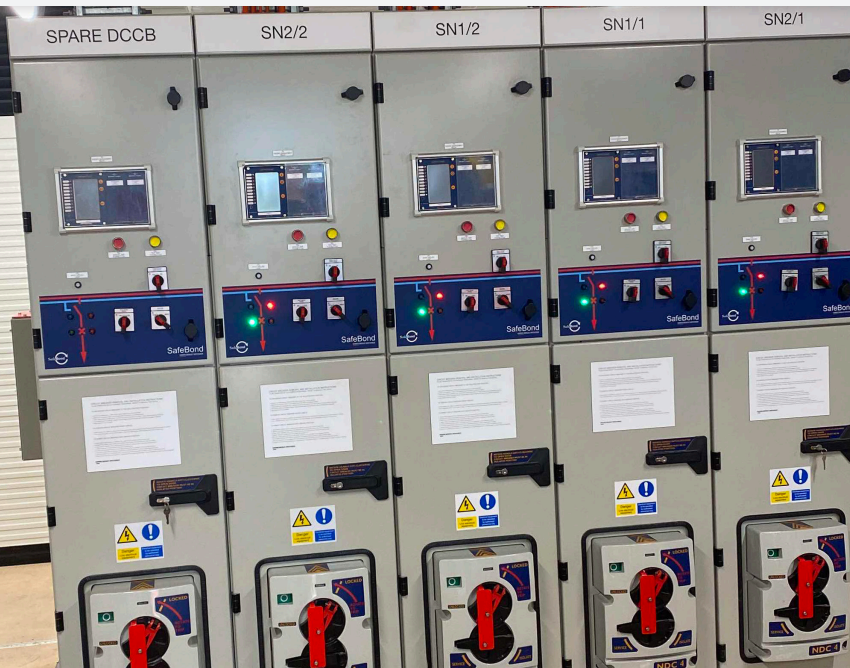


# MOUNT KURING-GAI SECTIONING HUT COMMISSIONING



Transport for NSW is upgrading electrical infrastructure as part of the Power Supply Upgrade Program, which is designed to meet expected power requirements for Sydney's future rail network and new fleet of air-conditioned trains. EnerMech was engaged to manage the Mount Kuring-Gai Sectioning Hut commissioning.

**Client:** NovoRail (Laing O'Rourke , John Holland)

**Year:** 2019 – 2020

**Service:** M&EI – Commissioning and Testing

## Scope of Work

Development and management of QA completions process for specialised traction equipment

Provision of highly competent multi-skilled personnel to perform testing and commissioning services

### Commissioning

- 1500V Switchboard
- UPS Commissioning – including Battery discharge testing
- Low voltage distribution board
- Automatic transfer switch
- Rail earth contractor / voltage limiting device
- Isolating rail connecting switches

### Testing

- Microelettrica Scientifica protection relay
- High voltage cable
- Low voltage cable
- SCADA Testing with Sydney Trains
- Inter-trip scheme

## Test Equipment Used

- Omicron CCPC100
- Omicron CMC356
- Omicron CMLIB A
- Omicron CT analyser
- Omicron TD1
- Omicron Cibano 500
- AC Hi-pot tester
- 10kV IR tester
- 200A Ductor Tester
- 60kV VLF Tester
- Battery Discharge Tester (Torkel)
- Process calibrators
- Multimeters

## Project Delivery

The Mount Kuring-Gai Sectioning Hut project involved upgrading and installing new power poles, overhead wires and a new sectioning hut inside the rail corridor at Mount Kuring-Gai.

EnerMech provided commissioning management on this project ensuring the successful completion of work to meet the expected power requirements of the future rail network.

## Key Benefits

Comprehensive commissioning package development and implementation

Seamless operations handover and technical support

Provision of highly experienced rail subject matter experts and high voltage commissioning team

